



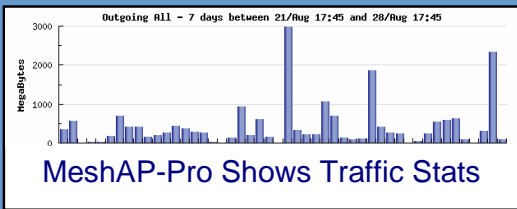
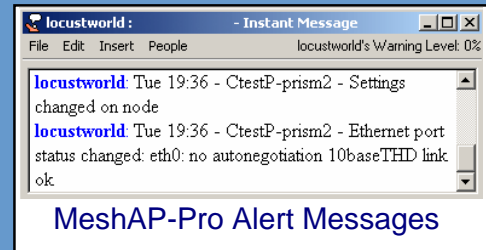
MeshAP-Pro – Professional Wireless Mesh Networking

LocustWorld MeshAP-Pro Supporting Commercial Network Operators

Wireless ISPs use the LocustWorld MeshAP-Pro to provide commercial internet services. Meshing builds a wide-range, resilient, wireless internet access network.

Independent market surveys have shown that the LocustWorld Mesh is the most widely used wireless mesh networking system in the world.

With a dedicated Network Operations Centre application, strong security, bandwidth controls and detailed user accounting, the MeshAP-Pro is a comprehensive system, helping WISPs to provide high quality, competitive services with strong commercial benefits.

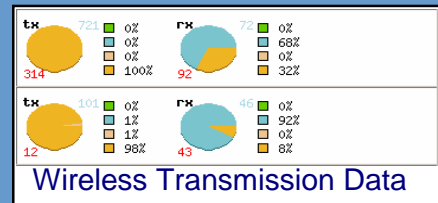


MeshAP-Pro runs on the LocustWorld MeshBox, and many other Mesh compatible systems available from LocustWorld Qualified Service Partners.

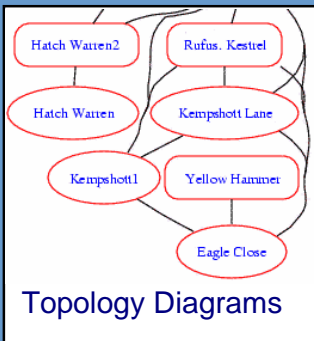
The MeshAP-Pro has a detailed **traffic monitor** system, letting the operator monitor usage on their mesh, spot abuse and log activity where it is required by law.

Operators can program the system to give them **alerts** automatically, when certain network criteria are met. These can give early warnings of issues that might affect network performance, like changes to settings, excessive temperature, missing nodes or other unusual behaviour.

Wireless network conditions are constantly monitored by the mesh, reporting details of **signal quality**, **throughput** and surveying nearby networks on **other channels**.



As the mesh grows the **topology** is updated graphically, visible on the management system on the web. With support for single and multiple radios, and mesh clustering, you can use the MeshAP-Pro to build mesh networks of any size and configuration.



The MeshAP-Pro is available from LocustWorld and from qualified distributors. Commercial terms for the MeshAP-Pro vary according to the country, scale and network application. LocustWorld provide a full set of professional services, training, technical consulting and ongoing support for customers world-wide.

Email business@locustworld.com, or call LocustWorld in the UK, on +44 20 7108 6215